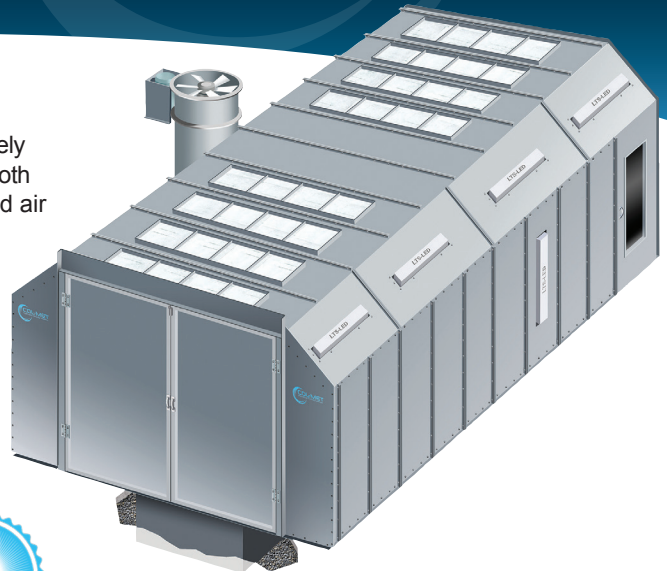


# EZ Pit Downdraft Spray Booth



Col-Met's EZ Pit Downdraft spray booths are designed to produce a high-quality finish in an extremely efficient manner. The booths are widely used in automotive applications. Through a filtered booth ceiling the booth intakes fresh air from the cleaner upper levels of the shop. The filtered air is drawn down and away from the product through exhaust filters in the pit located in the floor. This provides efficient overspray control that reduces prep time and also provides a much healthier workplace environment. An optional pre-filtered plenum for additional intake air filtration is also available. The downdraft design allows for easy pressurization with the addition of an intake plenum with fan or a heated air make up unit. The EZ Pit Downdraft booths are offered in solid back or drive through configurations as well as pressurized, non-pressurized and pre-filtered.



Col-Met booths are easy to install and simple to maintain. The quality and workmanship of Col-Met spray booths allow us to offer a 5-year warranty when using high performance W-Series RP Arrestor exhaust filters manufactured by Col-Met.



## Features

- Col-Met booths are constructed from heavy duty 18-gauge, prime quality galvanized steel and engineered with corresponding support structure.
- All panels and support members are laser cut and precision formed for consistent fit allowing for easy nut and bolt assembly.
- Doors are field hung on slotted hinges to facilitate adjustment on two axis' to compensate for field conditions. Our standard 36" wide personnel door is constructed with a square tube frame and covered with 18-gauge galvanized steel and includes an observation window.
- Col-Met booths ship with industry leading E-Light LED lighting which provides lower energy usage, exceptionally longer life, truer color rendering, reduced maintenance costs and includes a 5-year warranty.
- LED lighting is constructed of 22-gauge steel which is powder coated white, and available in 4000 and 8000 lumen models. E-Lights are ETL listed for US and Canada with Class 1 Division 2, Group A, B, C, D and Class 2 division 2, Group F and G ratings.
- High efficiency W-Series RP Paint Arrestor blanket media ships with every booth for extended life, increased depth loading and holding capacity. The blanket filters are secured in place with Col-Met FilterLoc technology which provides a tighter seal to the booth eliminating overspray bypass while providing quick and easy filter change outs.
- All Col-Met booths utilize efficient and quality brand-name tube-axial fans and motors.
- Air solenoid valve interlocked to the exhaust fan and air supply for the spray application equipment is also included.
- Col-Met booths meet and/or exceed quality performance standards and all applicable OSHA and NFPA regulations

## Options

- Air replacement units and intake chambers can be added
- Pre-filtered plenum for additional intake air filtration
- Durable powder coated white option available
- Roll-up, bi-fold or tri-fold doors
- Control panel and other electrical components can be purchased separately
- Exhaust ductwork
- Solid back, drive through, and reverse flow designs
- Booth extensions with or without lights



Optional UL & ETL listed control panel



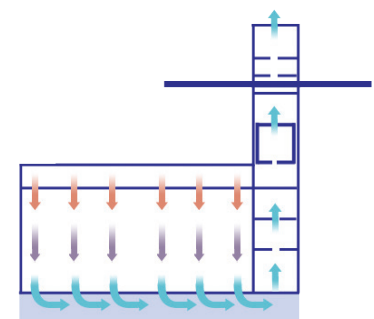
Windowed personnel access doors



Industry-leading LED lighting with 5-year warranty



5/16" bolts with serrated lock nut



Pit Downdraft booth air flow

# EZ Pit Downdraft Spray Booth



## Selecting a Booth Size

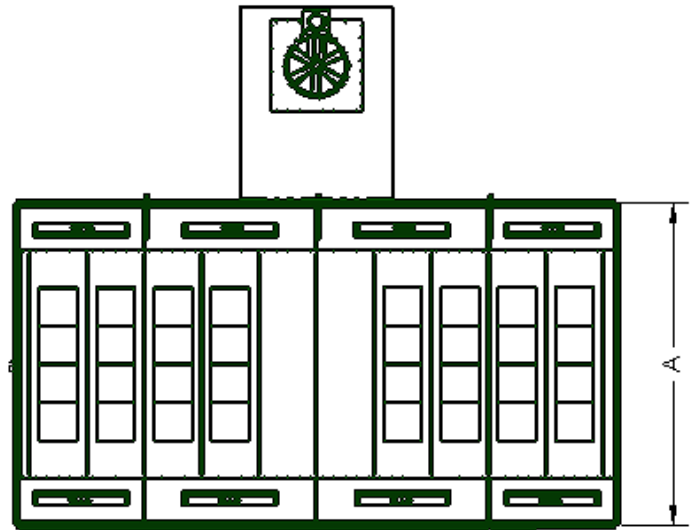
Col-Met can design and build booths in a variety of sizes and configurations. Although our team can engineer custom sizes to fit your needs, below are standard sizes that are pre-engineered and available for quick shipment.

Model Number	Interior Dimensions			Exterior Dimensions			Access Doors	Clear Door Opening				Qty. Lights	Air Flow SCFM	Fan Spec.		Filters
	Width	Height	Length	Width	Height	Length		Width	Height	Qty	Type			Dia.	HP	
EPD-14-09-26-N-SB-S	14'-0"	9'-0"	26'-0"	14'-10.5"	10'-0"	26'-4"	1	9'-4"	8'-10.5"	1	Solid	10	12,740	30"	5HP	32
<b>Reference Key</b>	<b>A</b>	<b>B</b>	<b>C</b>	<b>D</b>				<b>E</b>	<b>F</b>							

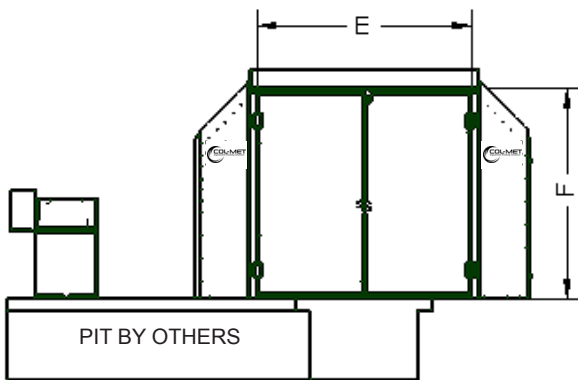
Alternative Configuration: Drive Through (DT)

Alternative Options: Pressurized (P) Pre-Filtered (PF)

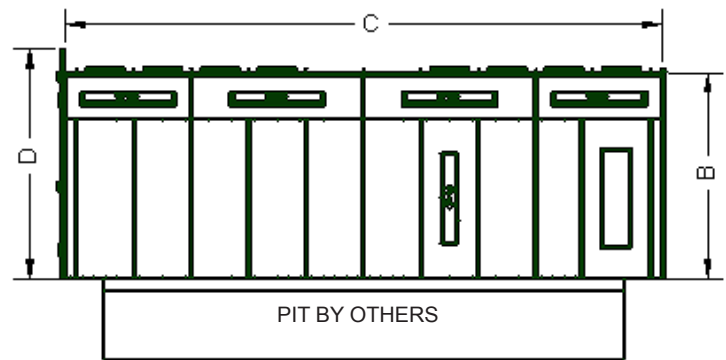
Standard length sizing is illustrated above



Plan View



Front View



Side Elevation

